

# ESB Networks' Weather Watch

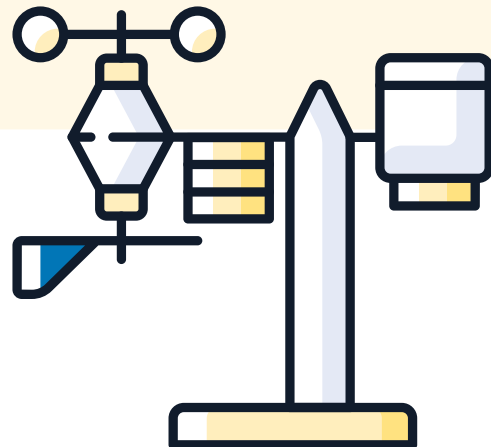
## Free school weather station

### Setup Instructions

#### PREPARATION

To set up your weather station, you will need the following:

- Phillips-head screwdriver
- 3 x AA batteries
- Your school Wi-Fi SSID and password
- A laptop (advised), tablet, or phone
- A suitable location for your weather station as outlined in the instruction manual provided with the weather station
- A means of mounting the weather station at your chosen location. Instructions on how to do this can be found in the information/instruction manual provided with the weather station.



**Weather Station Model:**  
 NATIONAL GEOGRAPHIC Wi-Fi Colour  
 Weather Station with 7-in-1 Sensor



Sections and page numbers in this quick guide relate to the manual received with your weather station.

Before continuing, **review sections 6–10** of the manual to familiarise yourself with the parts of the base unit (indoor receiver and display) and the weather station.

It is also advisable to read the **safety information** contained in the instruction booklet provided with the weather station.

Link to Device Manual (English from page 47): [https://www.bresser.com/media/ca/e3/00/1734375134/Manual\\_9080600\\_WIFI-Weather-Center-7in1\\_de-en\\_NATGEO\\_v112024a.pdf](https://www.bresser.com/media/ca/e3/00/1734375134/Manual_9080600_WIFI-Weather-Center-7in1_de-en_NATGEO_v112024a.pdf)

Please note: the digital manual varies slightly to the physical manual received with your weather station.



# 1 SETUP STEPS

## a POSITION THE DEVICES

Place the base unit (receiver/display) and the weather station (outdoor instrument) close together to begin.

## b POWER THE BASE UNIT

- Connect the power supply to the base unit and plug it in.
- Wait until the indoor temperature appears on the display under the **IN** column (the **OUT** column will be blank for now).

## c POWER THE WEATHER STATION

- Insert 3 x AA batteries into the weather station.
- Check the base unit's display: the **OUT** column on the left should start showing readings from the weather station within a minute or two. These values will not be accurate until the weather station is installed in its final outdoor location.

Don't forget to share your link with the project office.  
[esbnweatherwatch@realnation.ie](mailto:esbnweatherwatch@realnation.ie)

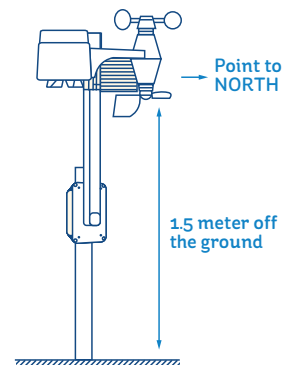
## d MOUNT THE WEATHER STATION IN YOUR CHOSEN LOCATION

Follow steps in **sections 13 and 14** (pages 43-96) of the manual for mounting.

### Key considerations

- The weather station should be mounted at least 1.5 metres from the ground.
- Choose a location without obstructions like buildings or trees.

- Align the weather station's arrow pointing north.
- Avoid a location where the weather station is likely to be hit by any footballs, etc.



## e CREATE AN ACCOUNT ON WEATHER CLOUD

Connect your device to the online service Weather Cloud. These services allow you and your students to view current weather conditions in real-time and access long-term weather data collected by your weather station.

The steps overleaf guide you through connecting to Weather Cloud.



## 2 STEPS TO CONNECT TO WEATHER CLOUD

- a Visit **Weather Cloud** ([weathercloud.net](http://weathercloud.net)) and click “Get Started” in the top right of the page.
- b Follow the instructions and create an account.
- c **Once logged in to your account, click “Create a Device” and fill in the following fields:**
  - **Name:** Name your device using the following format - ‘*ESB Networks’ Weather Watch - [School Name]*’
  - **Model:** Select “Bresser 7-in-1”
  - **Link Type:** Choose “Pro Weather Link”
  - **Website:** (Optional)
  - **Description:** ESB Networks’ Weather Watch - Schools’ Programme
  - **Location:** Fill in the relevant location data. This location refers to where the weather station will be installed – i.e., your school. Select “Get Coordinates” and find your school. To find the elevation, you can use a tool like [What’s My Elevation](#). Enter your weather station’s height from the ground (this should be at least 1.5 metres).
- d Click “Create”.
- e On your Weather Cloud account, click your account icon (top right), then select “Devices”.
- f You should see a list of “Your Devices” and the weather station should be listed here. Click “Settings” and select “Link Device”. You will be given a “Weathercloud ID” and “Key” at this stage.
- g Copy both these codes to a document or leave this tab open for later use.

**Complete setup by connecting the base station to your school’s Wi-Fi and to the Weather Cloud Service. This is important to allow you and your students to view current weather conditions in real-time and access long-term weather data collected by your weather station.**



Before continuing, please check that the base unit is receiving data from the weather station (to do this, ensure that the base unit is displaying values in the **OUT** column – these figures are being received from the weather station, which should now be set up in its chosen location outside). If this is the case, continue with the following steps:

- Press and hold the “Wi-Fi/Sensor” button on the back of the base station until “AP” flashes on the screen (*you need to hold the button down for about 5 seconds*).
- **Connect your laptop/tablet/phone to the weather station’s Wi-Fi network.**  
You can find this in your device’s Wi-Fi settings by clicking the Wi-Fi symbol where available networks are shown. Look for a new device listed with a name similar to **PWS-XXXXXX**.
- Once connected to your weather station’s Wi-Fi, open a new browser tab/window and go to **192.168.1.1** (type this into the address bar).

It may take a few seconds for the page to load, or you might need to refresh it.

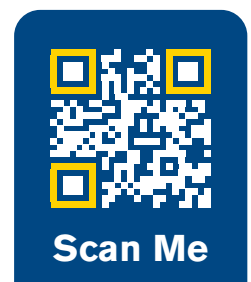
• **On the setup page, fill in the following:**

- 1. Router:** Select your school’s Wi-Fi network.
  - 2. Security Type:** Usually WPA/WPA2.
  - 3. Router Password:** Enter your school’s Wi-Fi password.
- Scroll down to the Weather Cloud section:
- 4. Station ID:** Enter the Weather Cloud ID from earlier.
  - 5. Station Key:** Enter the Key from earlier.
  - 6.** Scroll down and click **Apply**.

## FINAL STEP - SHARE YOUR LINK.

Share your weather station’s Weather Cloud Link with the project office to enable collaborative learning and data sharing with other schools!

- 1.** Log in to Weather Cloud and go to ‘your devices’ by clicking your profile image in top right corner.
- 2.** Select ‘Settings’ drop down menu for your device and select ‘Get Sticker’.
- 3.** Copy the HTML (websites and blogs) link and submit using a method below.



Use **this online form** or **scan the QR code** to access the form directly. Alternatively, email your school name, roll number and weather station link to [esbnweatherwatch@realnation.ie](mailto:esbnweatherwatch@realnation.ie)

## CONGRATULATIONS, YOU ARE FINISHED!

After applying the settings, your laptop/device will disconnect from the weather station’s Wi-Fi and reconnect to your default Wi-Fi. Within a few minutes, data from your weather station should appear on your Weather Cloud account. Access it anytime at Weather Cloud.

